

Original MuenchnerWerke



Installation instructions

Retrofitting illuminated tailgate release MW-E46HKEB

BMW 3er E46 Coupé, Convertible, Sedan and Touring

Installation instructions are only valid for vehicles of the 3er E46 Coupé, Convertible, Sedan and Touring Series.

Installation time

The installation time is **approx 1,0 hours**.

The installation time may vary depending on the condition and equipment of the vehicle.



The instructions are intended as an aid.

We accept no liability for any damage.

The target group for these installation instructions is specialist personnel trained on BMW vehicles with the appropriate specialist knowledge.

All illustrations show LHD vehicles; proceed accordingly for RHD vehicles.

When laying cables and/or lines, care must be taken to ensure that they are neither kinked nor damaged.

Additionally laid cables and/or lines must be secured with cable straps.

If the specified pin chambers are occupied, bridges, double crimping or parallel stops must be carried out.

MuenchnerWerke
Anton Rentel
Fasangartenstr. 134
81549 München

www.muenchnerwerke.com
+49(0)175 4841849
info@muenchnerwerke.com

USt-ID: DE343944806

Bankverbindung
HypoVereinsbank
IBAN: DE48700202700020305936
BIC: HYVEDEMMXXX

Copyright: © MuenchnerWerke

1. remove passenger seat bolts and nuts
Installation note: Replace micro-encapsulated bolts and nuts
Tightening torque: 45 Nm + 90°.



2. disconnect the battery
3. unplug front passenger seat central connector yellow



Note: Only disconnect when the battery is disconnected, otherwise an airbag error will occur

4. remove the front passenger seat or tilt it backwards

5. remove the cover strip on the inside of the driver's door



6. remove the driver's footwell trim



7. remove the footrest





8. remove tailgate button cover and install tailgate button in footrest recess

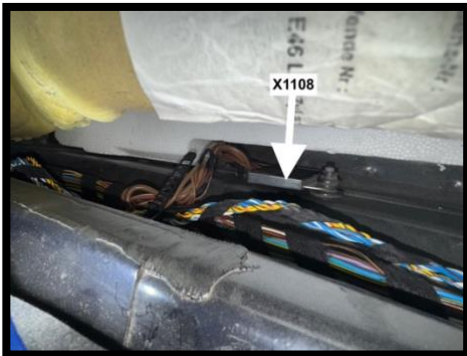


9. install retrofit wiring harness MW-E46HKEB with turquoise 6-pin connector
Route brown / black cable on the wiring harness to comb connector X1108
Route gray / red and gray / brown cable upwards on the wiring harness towards the steering spindle



10. loosen comb connector X1108 on driver's side door sill, loosen 10mm hexagon nut from stud bolt

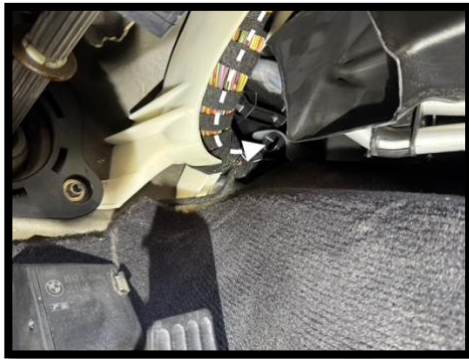
11. pin brown / black cable in comb connector X1108 on free comb



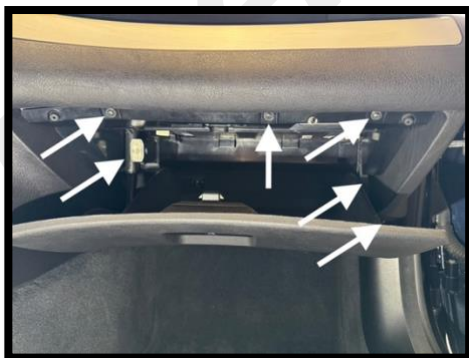
12. lay gray / red and gray / brown cable along the wiring harness via the steering spindle towards the fuse box



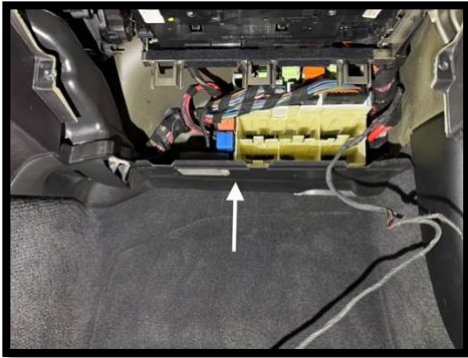
13. the main wiring harness runs between the bulkhead and the blower box as standard here a black corrugated conduit is installed ex works
Route the gray / red and gray / brown cable through the black corrugated conduit towards the fuse box



14. remove glove compartment



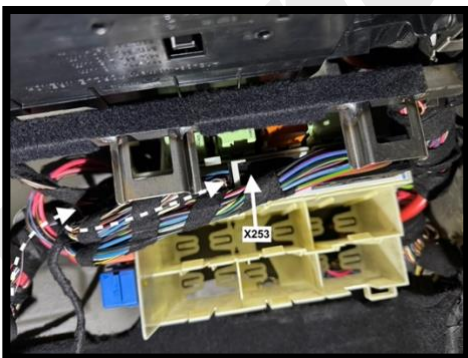
15. remove passenger footwell trim



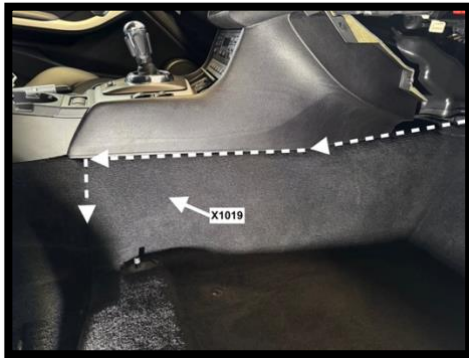
16. receive gray / red and gray / brown cable from corrugated empty pipe on passenger side
17. lay gray / brown cable along the wiring harness to connector X253



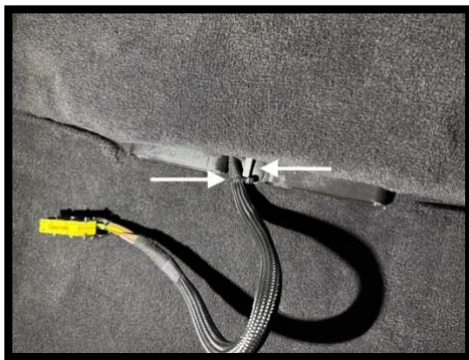
18. lay gray / brown cable along the wiring harness to connector X253



19. lay gray / red cable under dashboard and center console to connector X1019



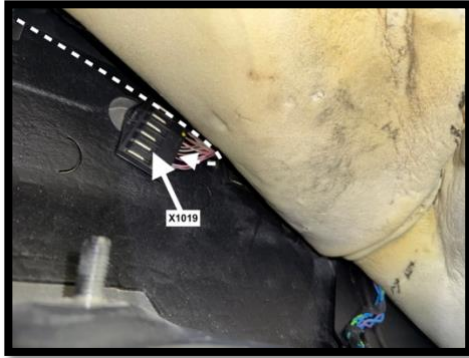
20. remove cable tie from passenger seat wiring harness on cable tie plastic nut and unscrew cable tie plastic nut



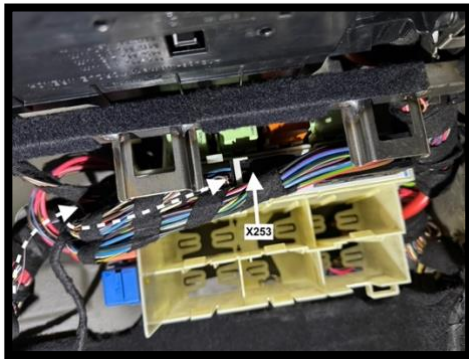
21. carefully lift the front carpet on the passenger side at the height of the transmission tunnel



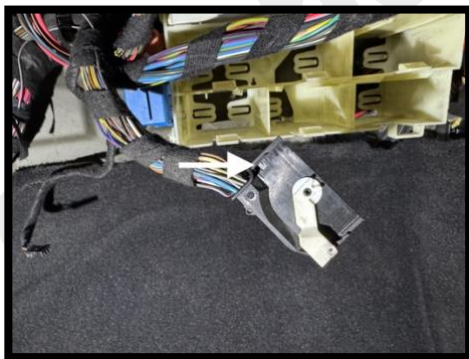
22. loosen comb connector X1019, this is only pressed onto the stud bolt
Insert gray / red cable into comb connector X1019 on free comb



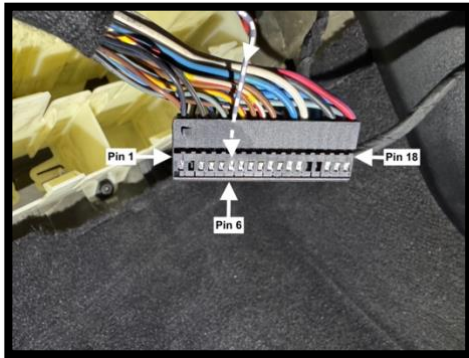
23. disconnect connector X253 from base module



24. open the connector lock on both sides and separate the housing from the inlay



25. insert gray / brown cable into base module connector X253 PIN 6



26. lock all plug connections again and plug in the connectors
Reassemble the vehicle in reverse order