



Installation instructions for Vanos cover S65

- In collaboration with our **partner Motorsporttechnik Mandel**, we have developed these aluminum covers to fit the camshaft adjustment unit on the S65 engine. The covers replace the original plastic covers, which are easily damaged and break, which can result in engine damage.
- To ensure the full functionality of the Vanos adjustment, please follow the product images when fitting the covers.
- **Motorsport parts, no warranty, guarantee for consequential damage or installation errors!**
- **Suitable for single use only!**



Figure 1: Ensure that the cover is pushed on straight from above without tilting so that all "wings" snap into place. Observe the positioning in the direction of rotation as shown in the following pictures.

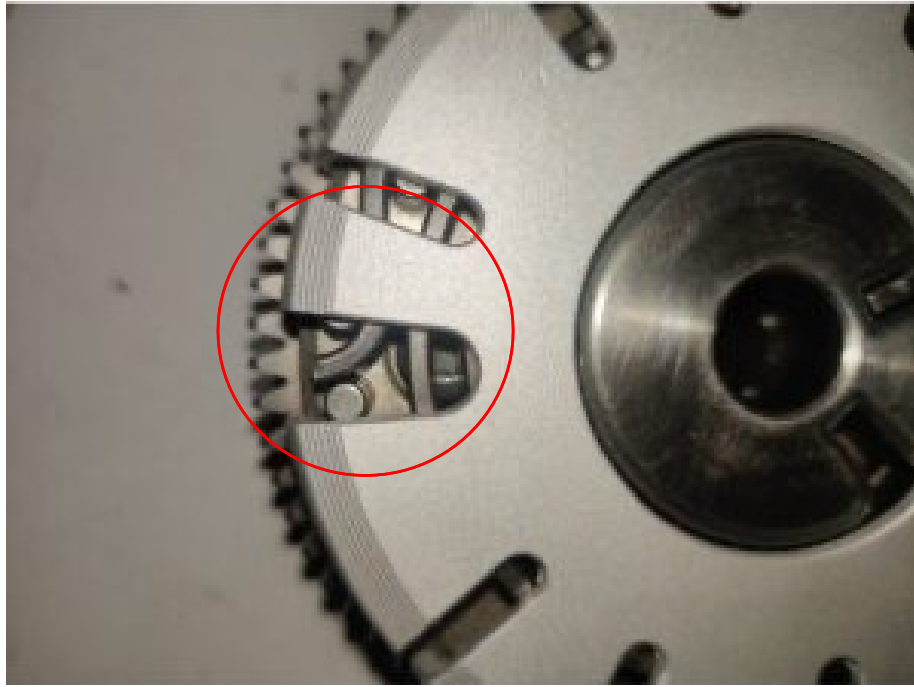


Figure 2: The narrowest sash with the largest recess must be positioned so that the outer end of the spiral spring of the Vanos adjustment device is visible.

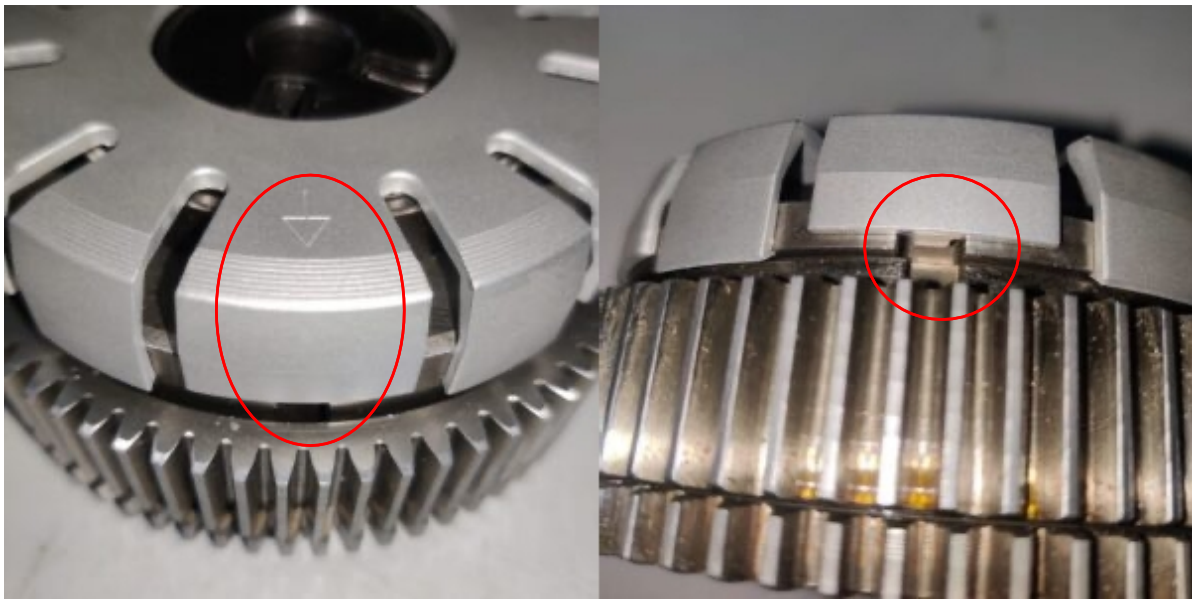


Figure 3: Diagonally opposite the position in Figure 2, the "tongue" on the inside of the cover (marking on the outside of the cover) must engage in the correct "groove" of the Vanos adjustment device.

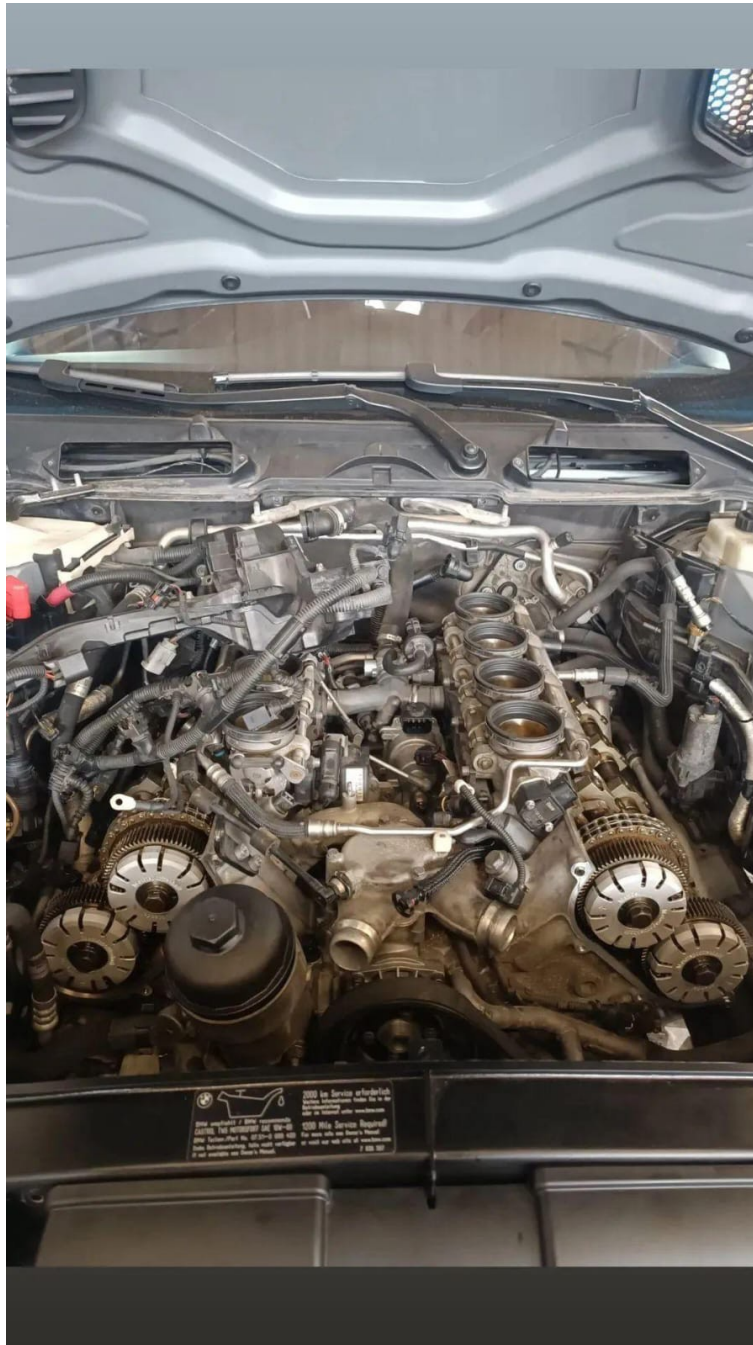


Figure 4: Result of the work



HUHKHAH
ENGINEERING