

Installation instructions / Setup Manual



Attention! Please read the installation instructions carefully before beginning installation and follow the instructions.

Attention! Please read the installation instructions carefully before starting the installation and pay attention to the notes.

Installation is shown in these instructions on the right side of the vehicle. The work should be carried out in the same way on the left side. We recommend using an oscillating multi-tool to cut out the original grille. A utility knife also works, but carries a high risk of injury.

The installation is shown on the right side of the vehicle in this manual. The procedure on the left side must be carried out in the same way. We recommend using an oscillating multi-tool to cut out the original grille. Using a utility knife is also possible, but it carries a high risk of injury.

Required tools



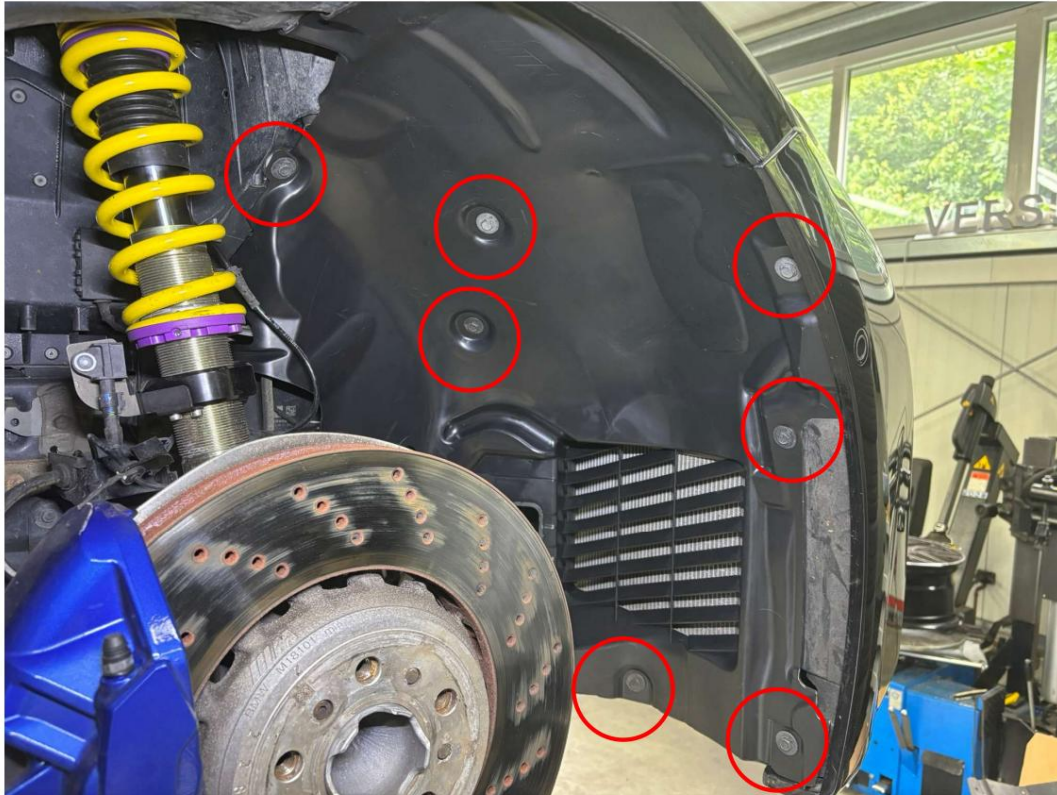
1. Ratchet wrench, 10mm socket, extension bar 2. Oscillating multi-tool
3. Cutter knife 4. Drill and 4mm drill bit 5. Pop rivet
pliers 6. Torque wrench,
suitable 17mm socket

1. Ratchet wrench, 10mm socket, extension 2. Oscillating
multi-tool 3. Utility knife (box
cutter)
4. Drill and 4mm drill bit 5. Pop
rivet gun 6. Torque
wrench, suitable 17mm socket

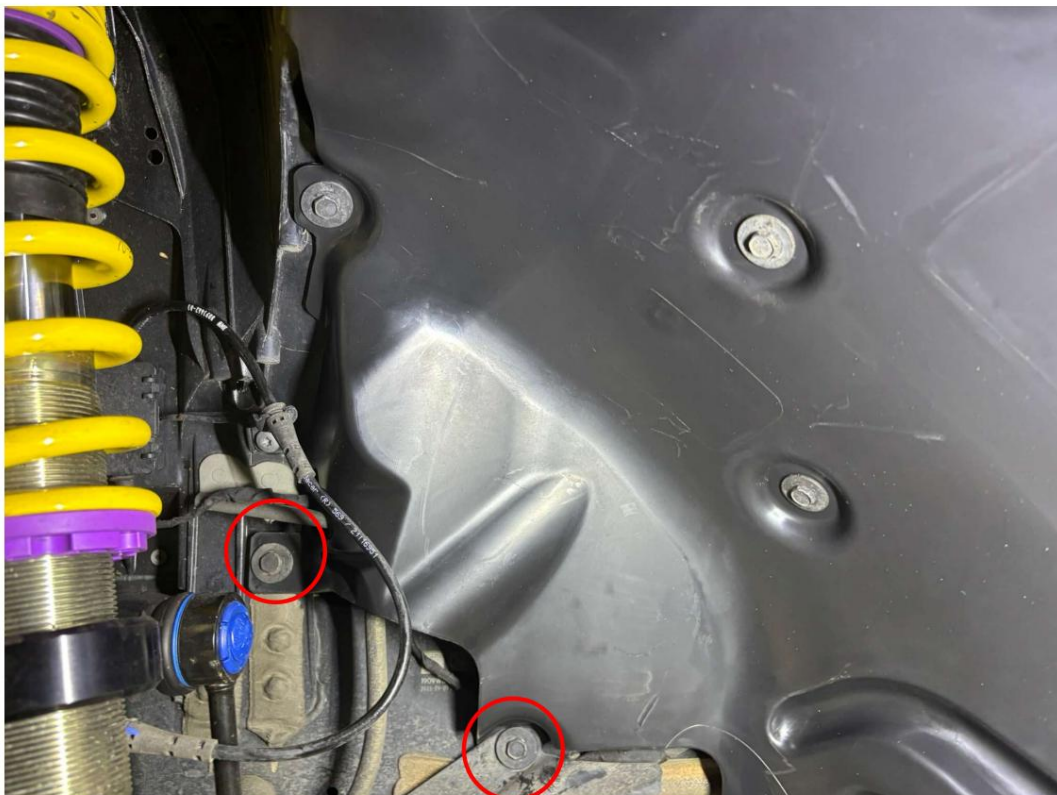
I. Preliminary work

1. Remove the front wheels.

II. Removal of the front wheel house trim



Remove the
Screws of the
front
Wheel arch liner.





**Remove the
Screws of the
front
wheel house trim.**



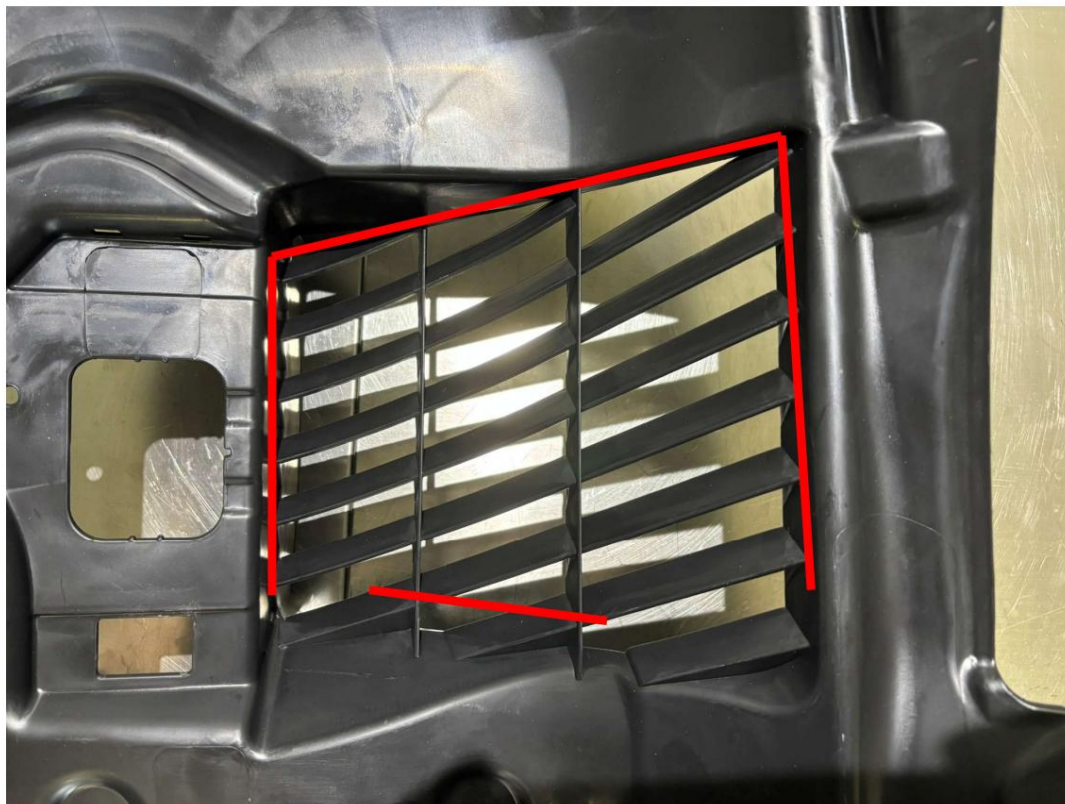


**Carefully remove
the front**

**Wheel house trim and
pay attention**

**Make sure that the
plastic nuts have not
been displaced or
damaged.**

III. Cutting out the original grid

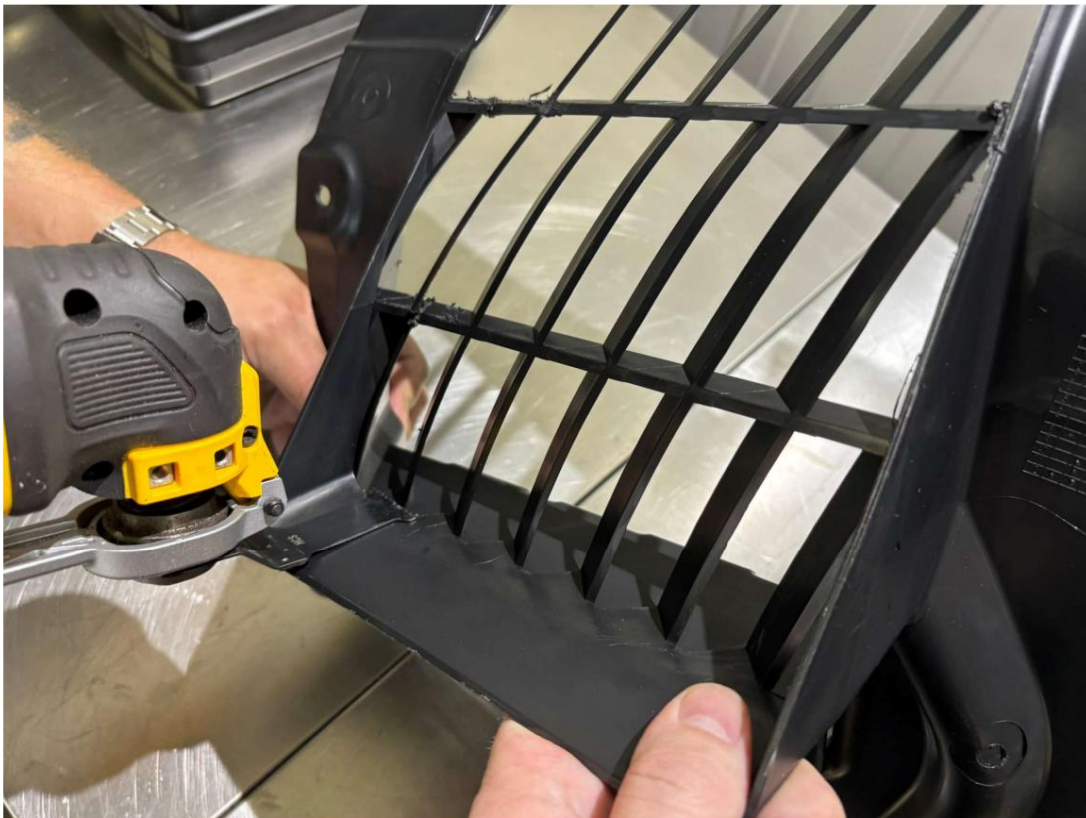


**Carefully cut off
the struts along the red
line. CAUTION!**

**The bottom three
Elements must remain
standing.**

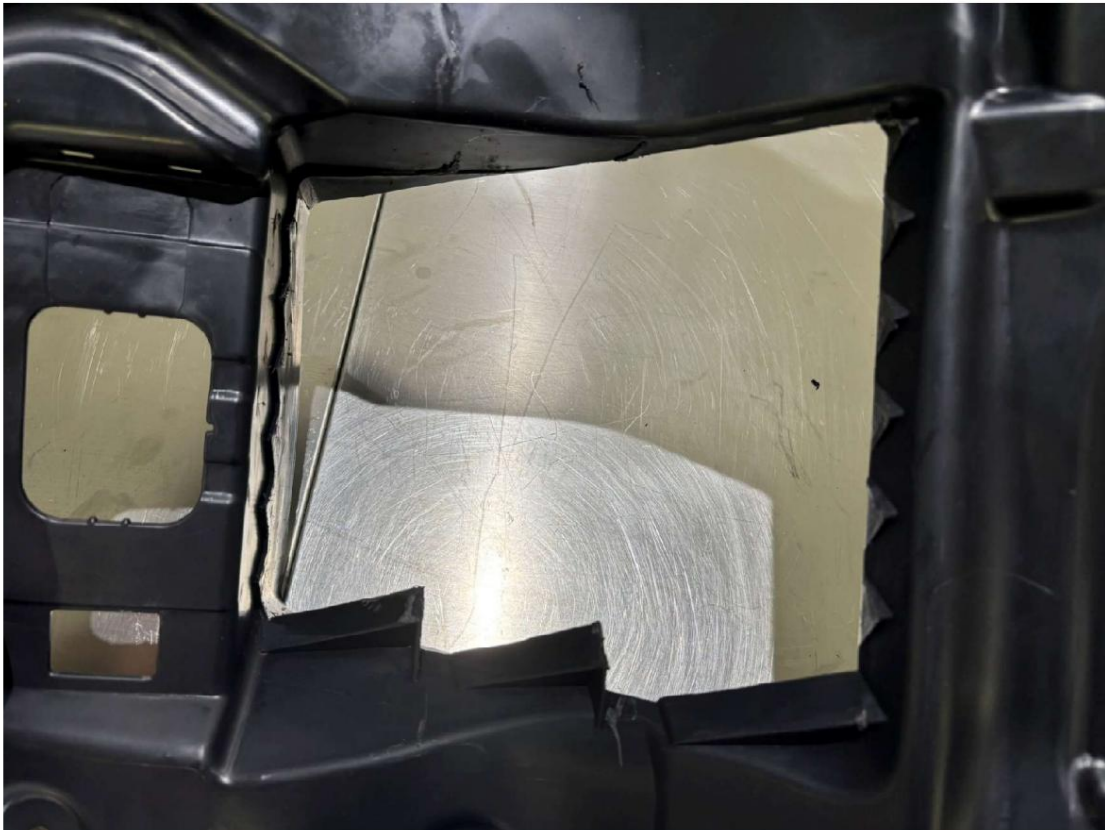


**Cut so that as
little of
the struts
as possible
remains.**





**Protruding
Leftovers can be
carefully cut off
with a cutter.
Knife must be
removed.**

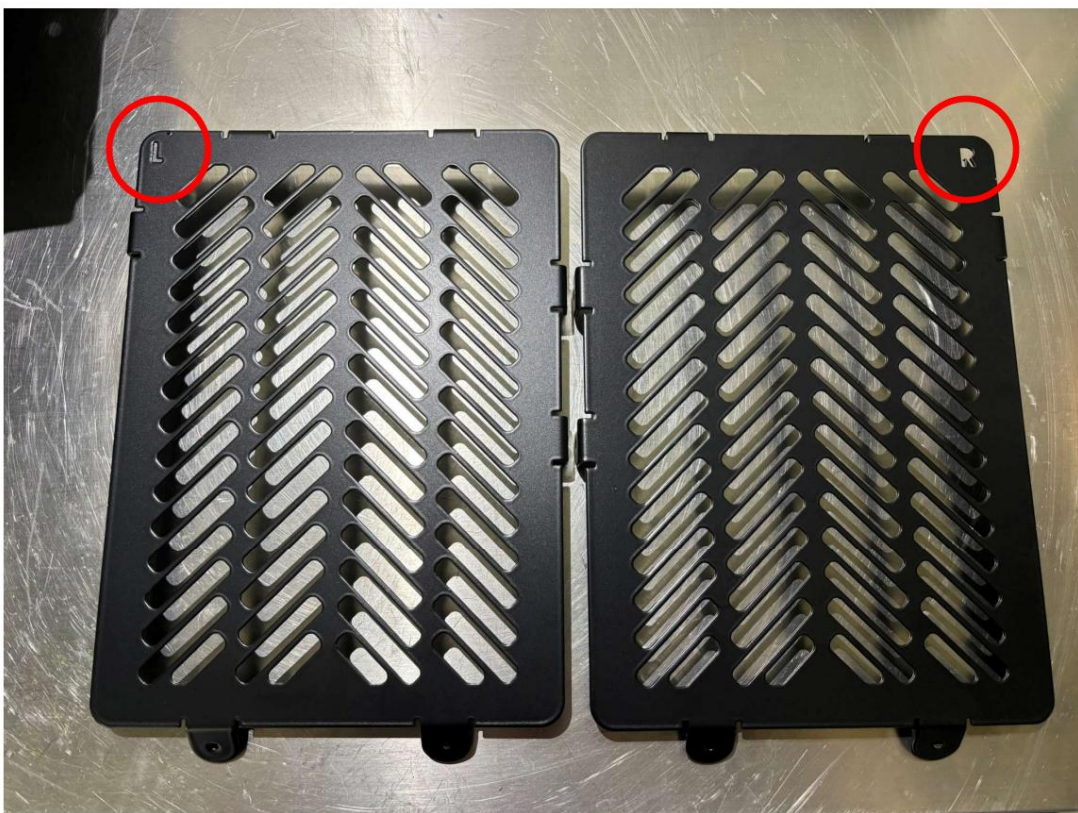


**This is what
the cutout should
look like now.**

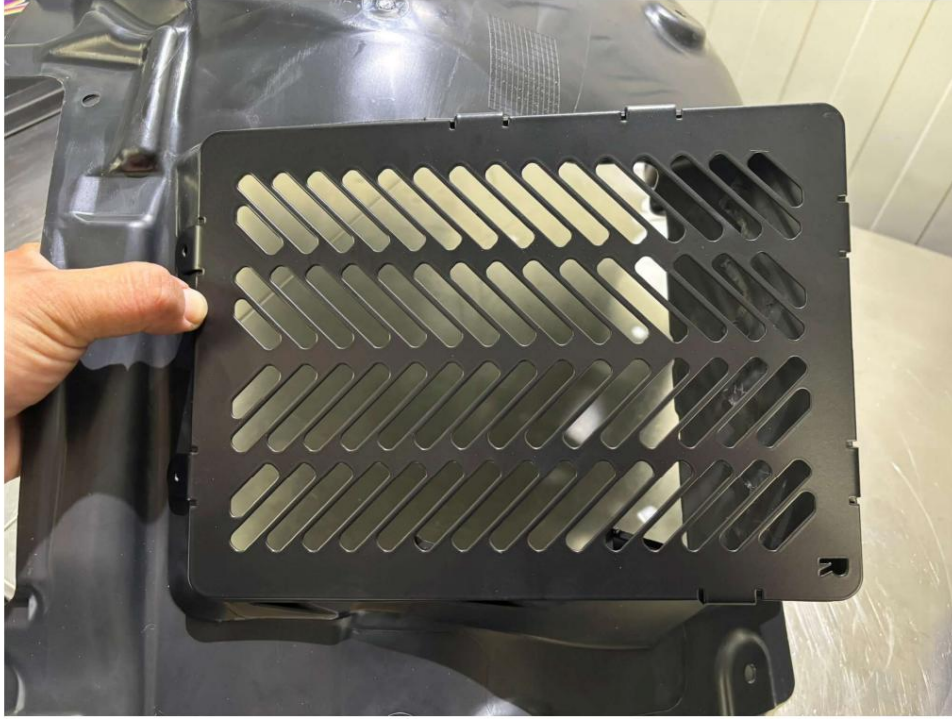
IV. Installation of the Vantrex grids



Remove the grilles
and pop rivets
from the box.



The grids are
equipped
with the corresponding
Installation side
marked.



**The grilles from
behind on the
Place cutout.**



**Make sure all tabs
are in the
correct position.**

**Hold the grille in
position
with light pressure.**



Drill with the 4mm

**Drill the
Holes of the
top two tabs.**

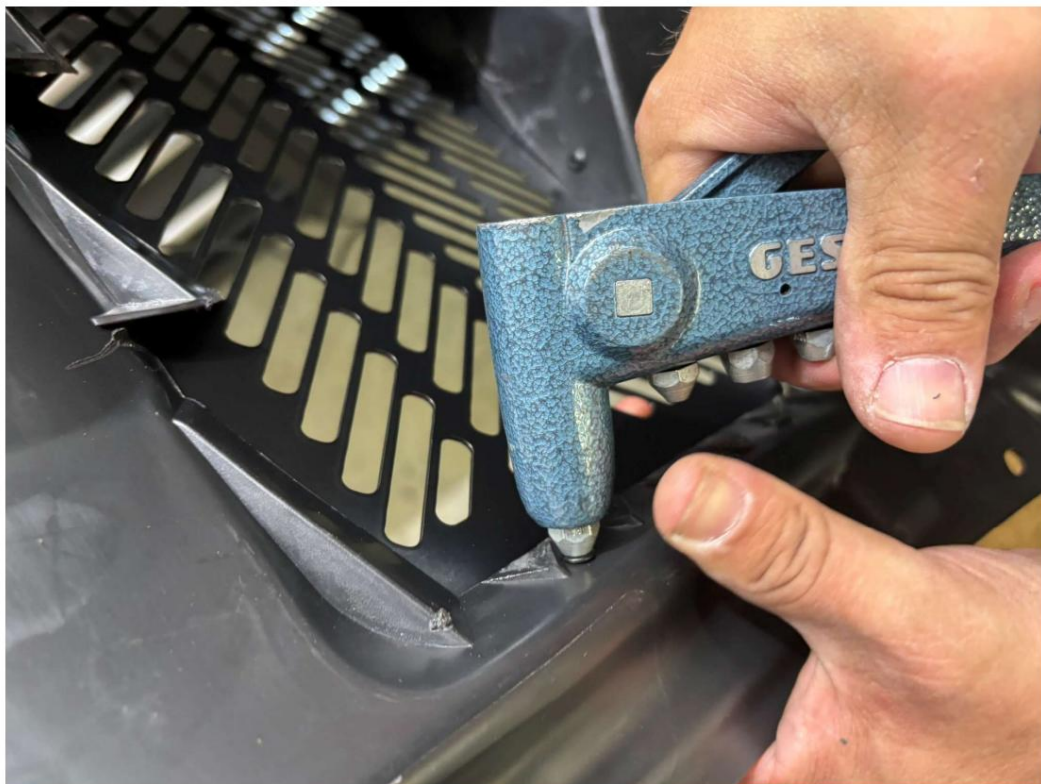
**Keep the
grille in
position.**



**Destroy You
now the
Tabs of the
before
drilled holes
from the opposite
side as shown here.**



Now drill
the holes of the
two side
Tabs.
Continue to
hold the grid
in Position.



Destroy You
now the
Tabs of the
before
drilled holes
from the opposite
side as shown here.



After drilling the hole for the single top tab, the rivet must be riveted as shown.



Now carefully drill the holes for the last two tabs.

ATTENTION! Here consists of the Danger of drilling through the grille.



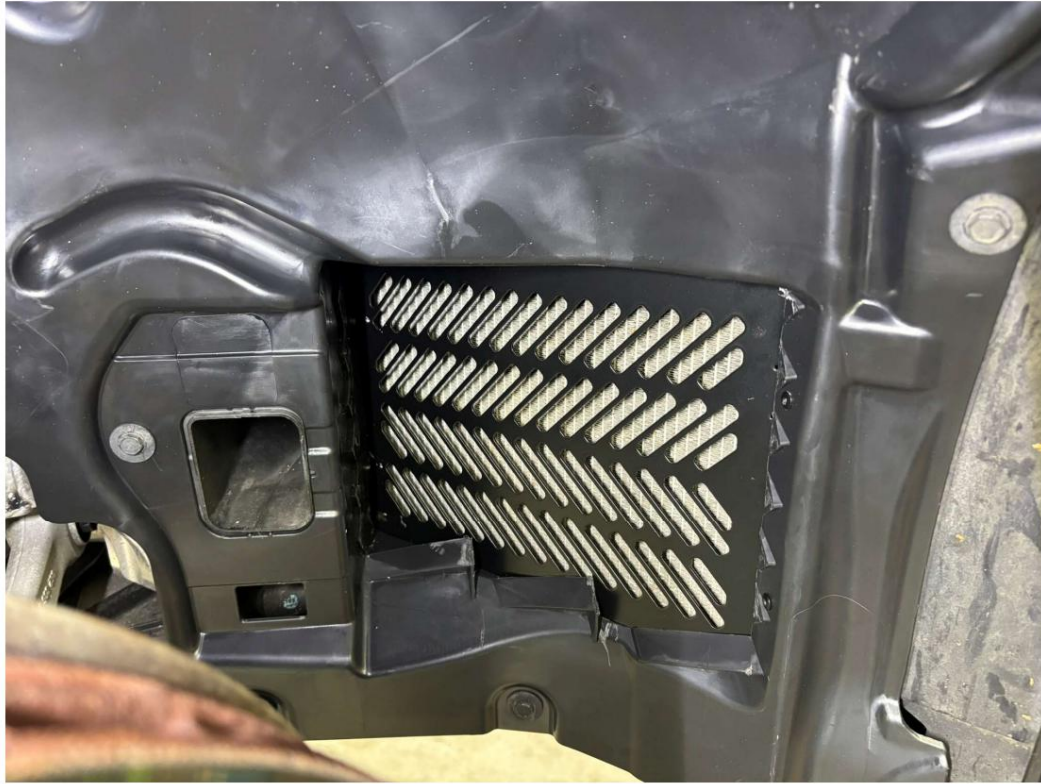
**Then rivet the
last two tabs
as shown.**

V. Installation of the front wheel house trim



**Reposition the wheel
house trim in its intended
position.**

**Make sure that all
holes align with
the threads.**



Reinstall all previously removed screws.

When tightening, make sure that the plastic nuts

not to damage.

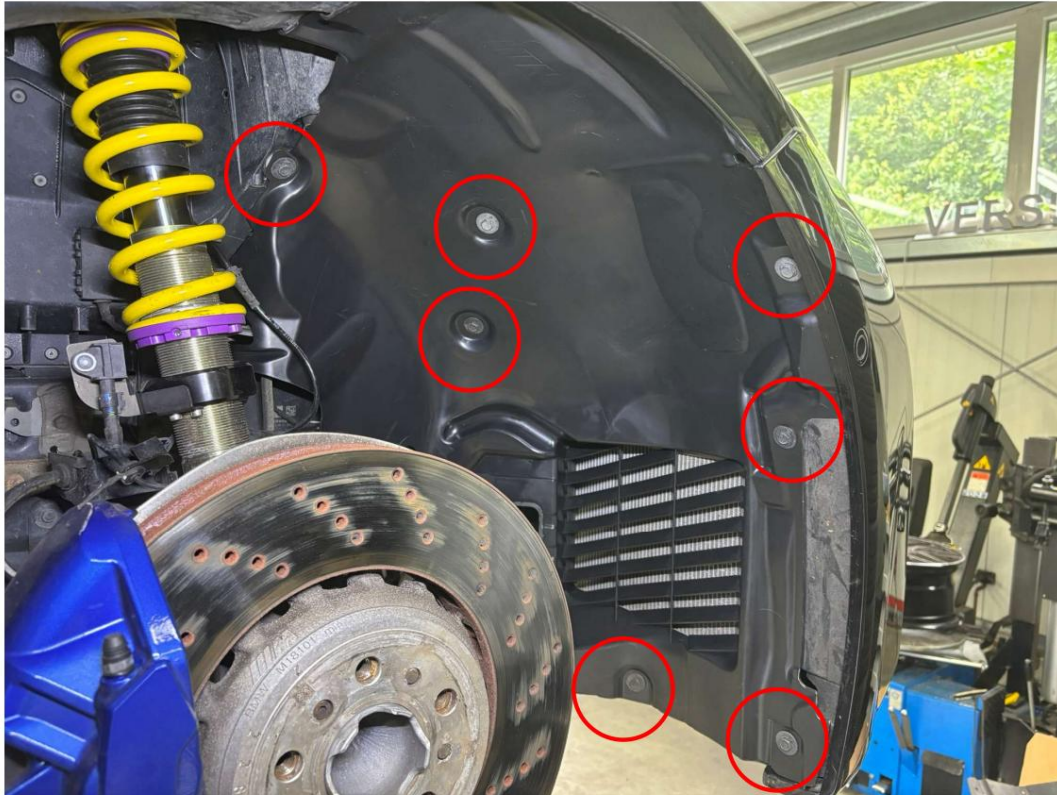
VI. Rework

- 1. Mount the front wheels and tighten to 140Nm.**

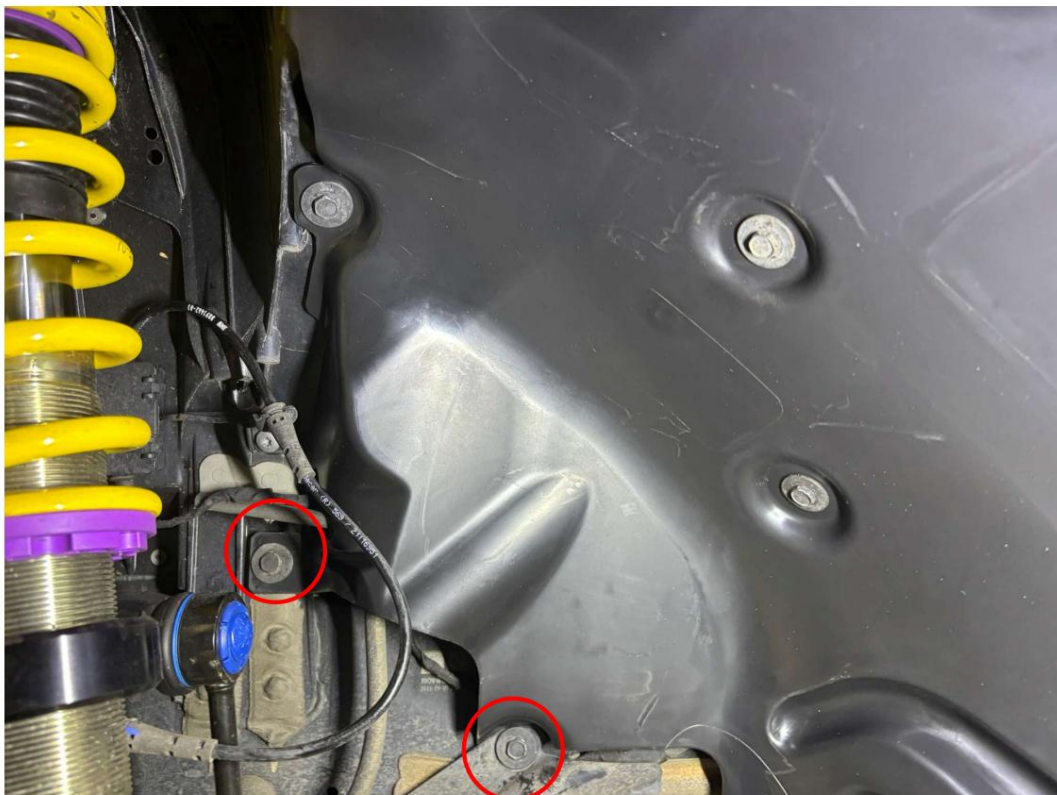
I. Preliminary work

1. Remove the front wheels.

II. Removal of the front wheel arch liner



**Remove the screws
of the front wheel
arch liner.**





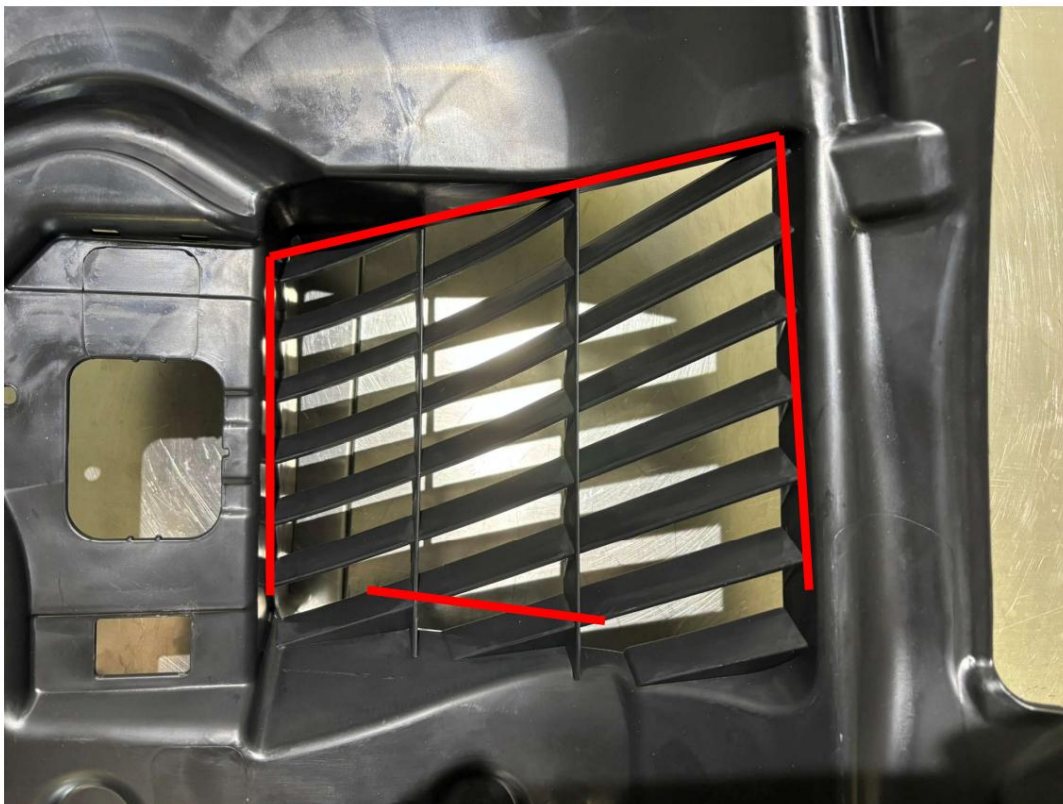
**Remove the screws
of the front wheel
arch liner.**





Carefully remove the front wheel arch liner, making sure that the plastic nuts are not displaced or damaged.

III. Cutting out the original grille

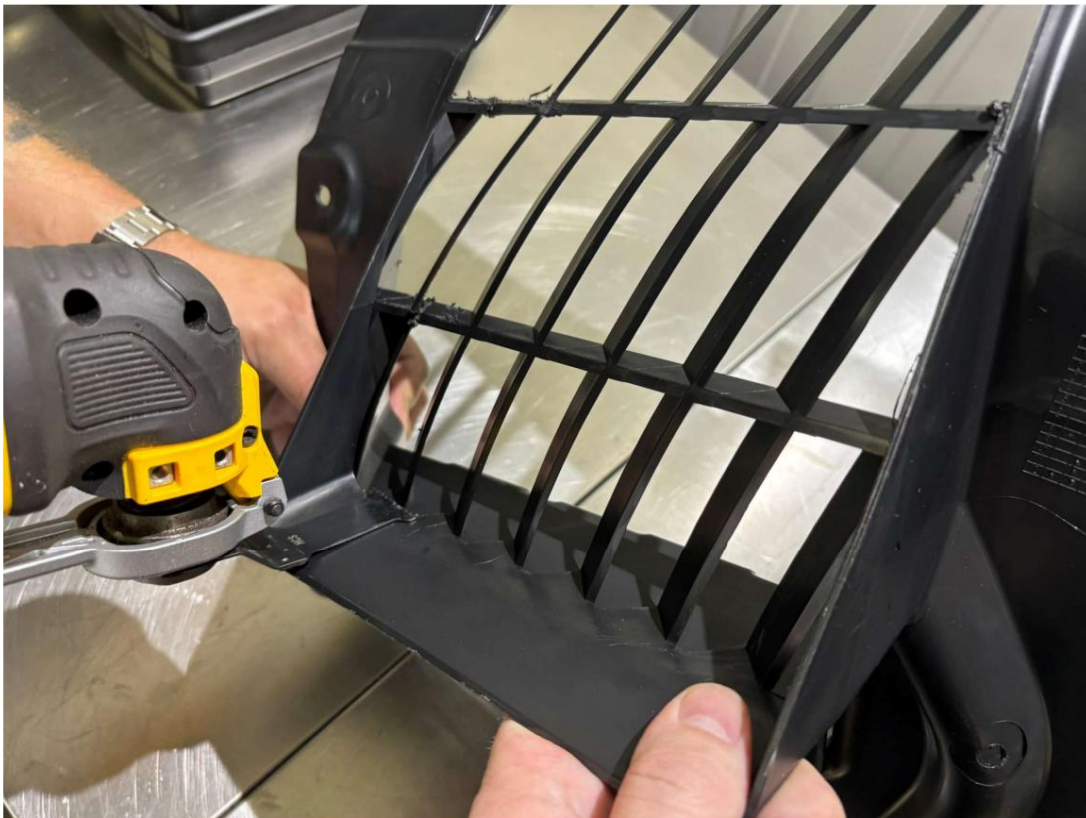


Carefully cut off the struts along the red line.

CAUTION!
The lower three elements must remain intact.

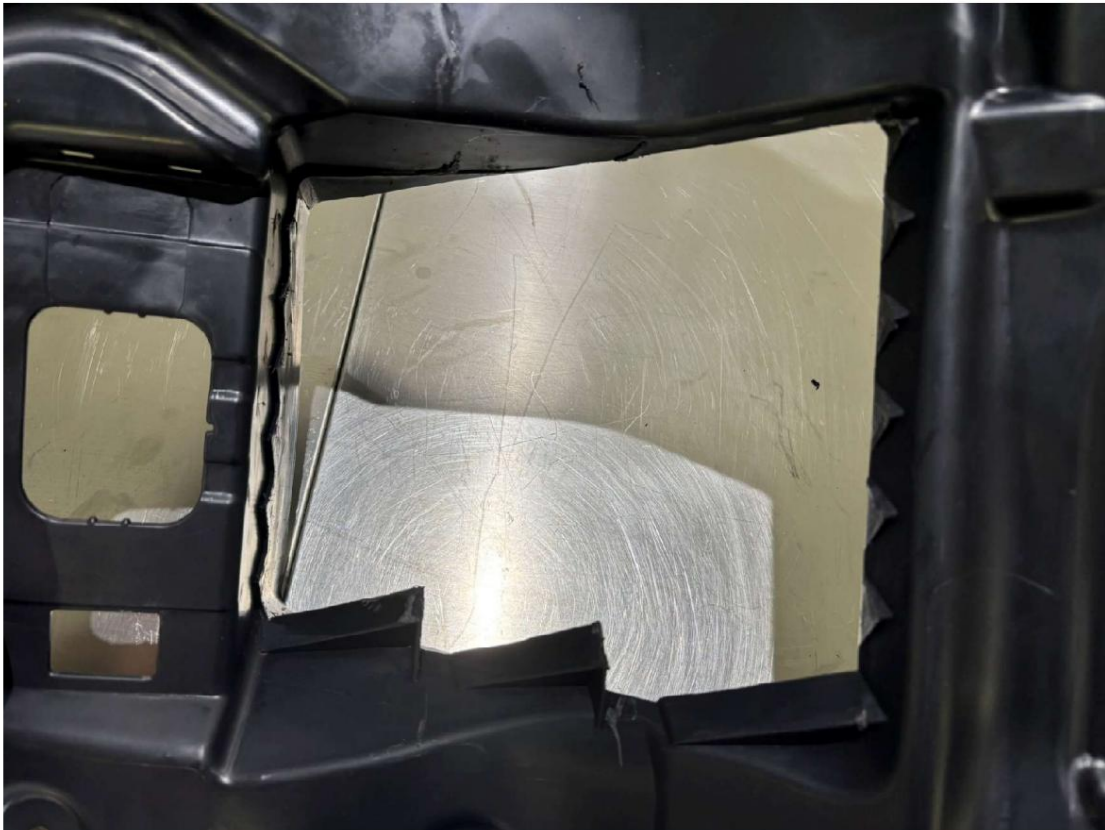


**Cut in a way
that leaves as
little of the
struts as
possible**





**Protruding
remnants can
be carefully
removed with a utility
knife.**

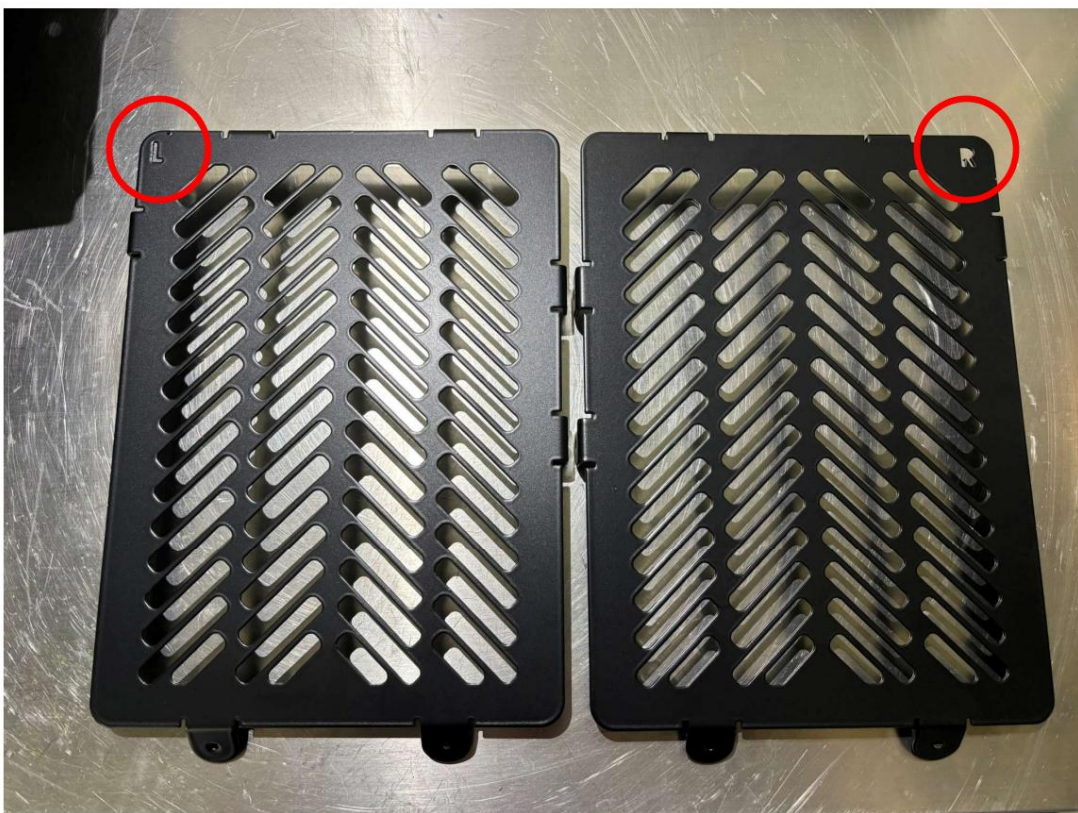


**This is how the
cutout should look
now.**

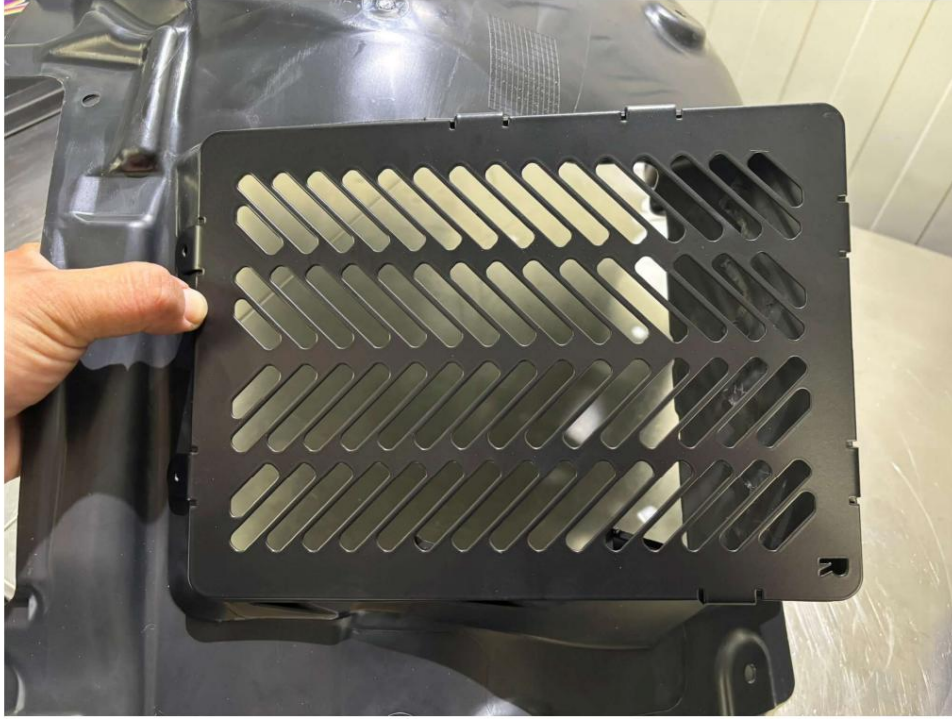
IV. Installation of the Vantrex grids



Remove the
grilles and the
pop rivets from
the box.



The grilles are
marked with the
corresponding
installation side.



**Place the
grilles from the
back onto the
cutout.**



**Make sure all
the tabs are in
the correct
position. Hold
the grille firmly in
place with
gentle
pressure.**



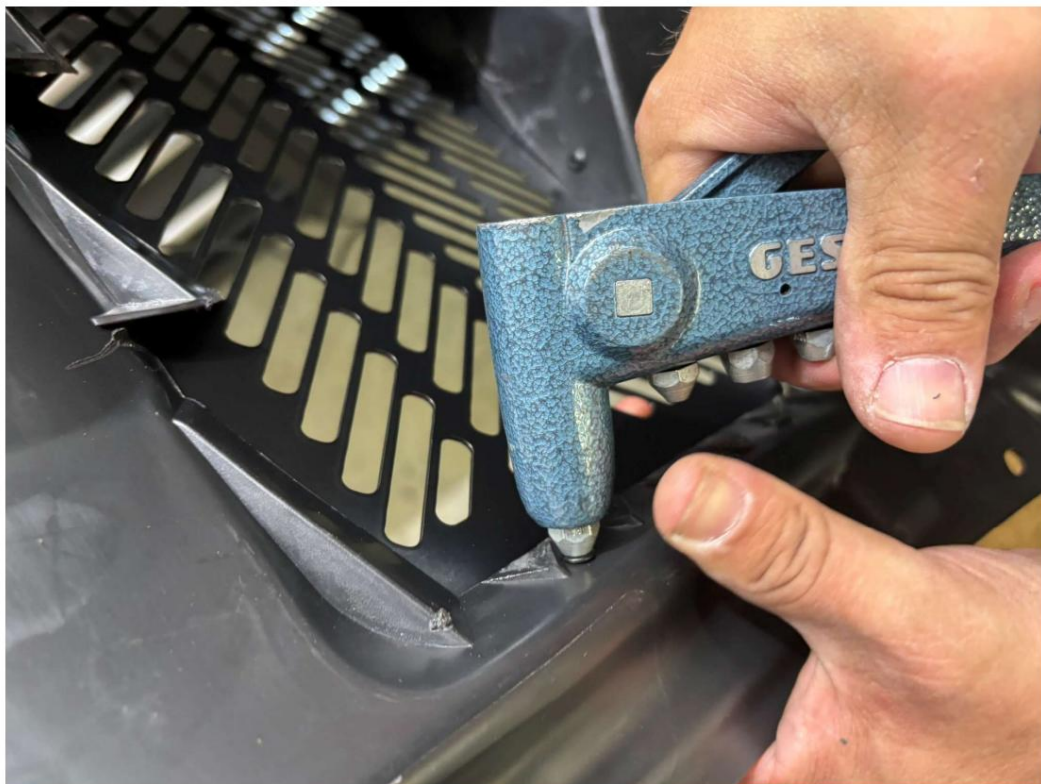
**Drill holes for
the top two
tabs using the
4mm drill bit,
keeping the
grille securely in
position.**



**Now rivet the
tabs of the
previously
drilled holes
from the
opposite side as
shown here.**



Now drill the holes for the two side tabs, keeping the grille securely in position.



Now rivet the tabs of the previously drilled holes from the opposite side as shown here.



After drilling the hole in each upper tab, the rivet must be set as shown.



Now carefully drill the holes for the last two tabs.
CAUTION! There is a risk of drilling through the grille.

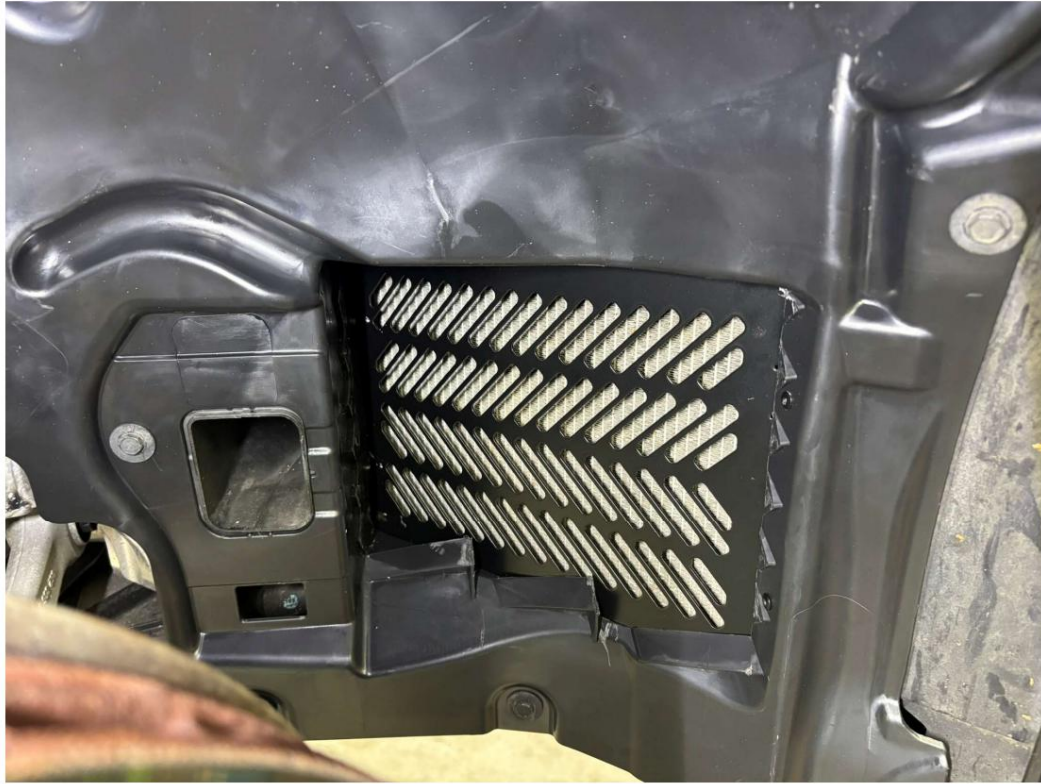


**Then rivet the
last two tabs as
shown.**

V. Installation of the front wheel arch liner



**Position the wheel
arch liner back into its
designated place.
Make sure all the
holes align with the
threaded inserts**



**Reinstall all
previously
removed screws.
Be careful not to
damage the
plastic nuts when
tightening them.**

VI. Final work

- 1. Mount the front wheels and tighten them to 140 Nm.**